

# State of Wyoming Corner Record

(In compliance with the *CORNER PERPETUATION AND FILING ACT*, Wyoming Statutes, 1977, Section 36-11-101, et. seq., and the Rules and Regulations of the Board of Registration for Professional Engineers and Professional Land Surveyors)

Reverse side of this form may be used if more space is needed.

Record of original survey and citation of source of historical information (if corner is lost or obliterated). Description of corner monumentation evidence found and/or monument and accessories established to perpetuate the location of this corner. Sketch of relative location of monument, accessories, and reference points with course and distance to adjacent corner(s) (if determined in this survey). Method and rationale for reestablishment of lost or obliterated corner.

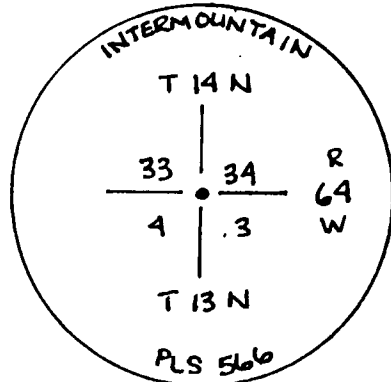
**FOUND: NOTHING**

**NOTE: SET BY SINGLE PROPORTION**

**SET: 3/4" ALUMINUM CAP ON ALUMINUM PIPE STAMPED AS SHOWN**

**REFERENCES SET: P.K. NAILS WITH WASHERS STAMPED LS 566**

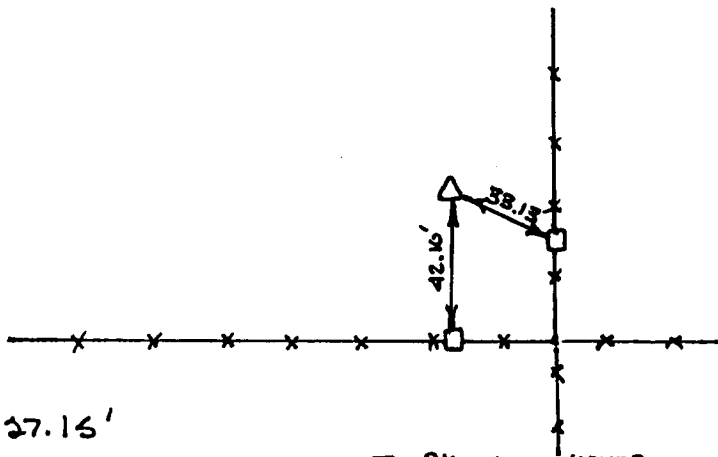
**GLO RECORD: LIMESTONE 24"x10"x6"**



LARAMIE COUNTY CLERK  
CHEYENNE, WY.

'96 SEP 13 AM 10 56

189559



to N 1/4 Sec. 3 = 2627.15'  
to W 1/4 Sec. 3 = 2599.65'

□ - P.K. WITH WASHER  
STAMPED LS 566  
SET IN FENCE POST.

See also plat of Dolence Estates West

Date of Field Work: JULY 17, 1995 Office Reference: 2823

**CROSS INDEX DIAGRAM**

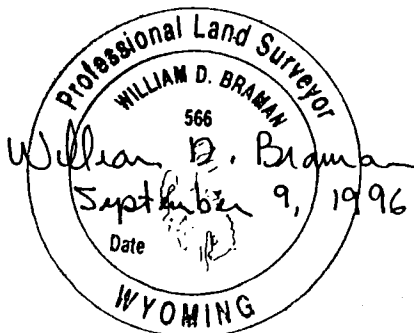
	1	2	3	4	5	6	7	8	9	10	11	12	13	14	15	16	17	18	19	20	21	22	23	24	25
A																									
B																									
C		6																							
D			5																						
E				4																					
F					3																				
G						2																			
H							1																		
I																									
J																									
K																									
L																									
M																									
N																									
O																									
P																									
Q																									
R																									
S																									
T																									
U																									
V																									
W																									
X																									
Y																									
Z																									

Firm/Agency, Address

INTERMOUNTAIN PROFESSIONAL SERVICES, INC.  
5801 OSAGE AVENUE  
CHEYENNE WY 82001

Telephone Number: (307) 632-3138

This corner record was prepared by me or under my direction and supervision.  
**SEAL & SIGNATURE**



Corner Name: SEC COR 33 | 34 Section: T 13N R 64W 6 P.M. Cross-Index No.: A-13  
4 | 3 14N 64W 6 Z-13